

FOLKLORE VIS-A -VIS NATURE

A STUDY ON FOLK PERFORMANCES OF KERALA

Dr. V.Jayarajan

FOLKLORE CONSISTS OF LEGENDS, MUSIC, ORAL HISTORY, PROVERBS, JOKES, POPULAR BELIEFS, FAIRY TALES, CUSTOMS THAT ARE THE TRADITION OF THAT CULTURE, SUB CULTURE OR GROUP. IT IS ALSO THE SET OF PRACTICES THROUGH WHICH THOSE EXPRESSIVE GENRES ARE SHARED.

FOUR BROAD SECTORS OF FOLKLORE

- ◉ Oral literature
- ◉ Material culture
- ◉ Social Folk custom
- ◉ Performing folk arts

ORAL LITERATURE



MATERIAL CULTURE



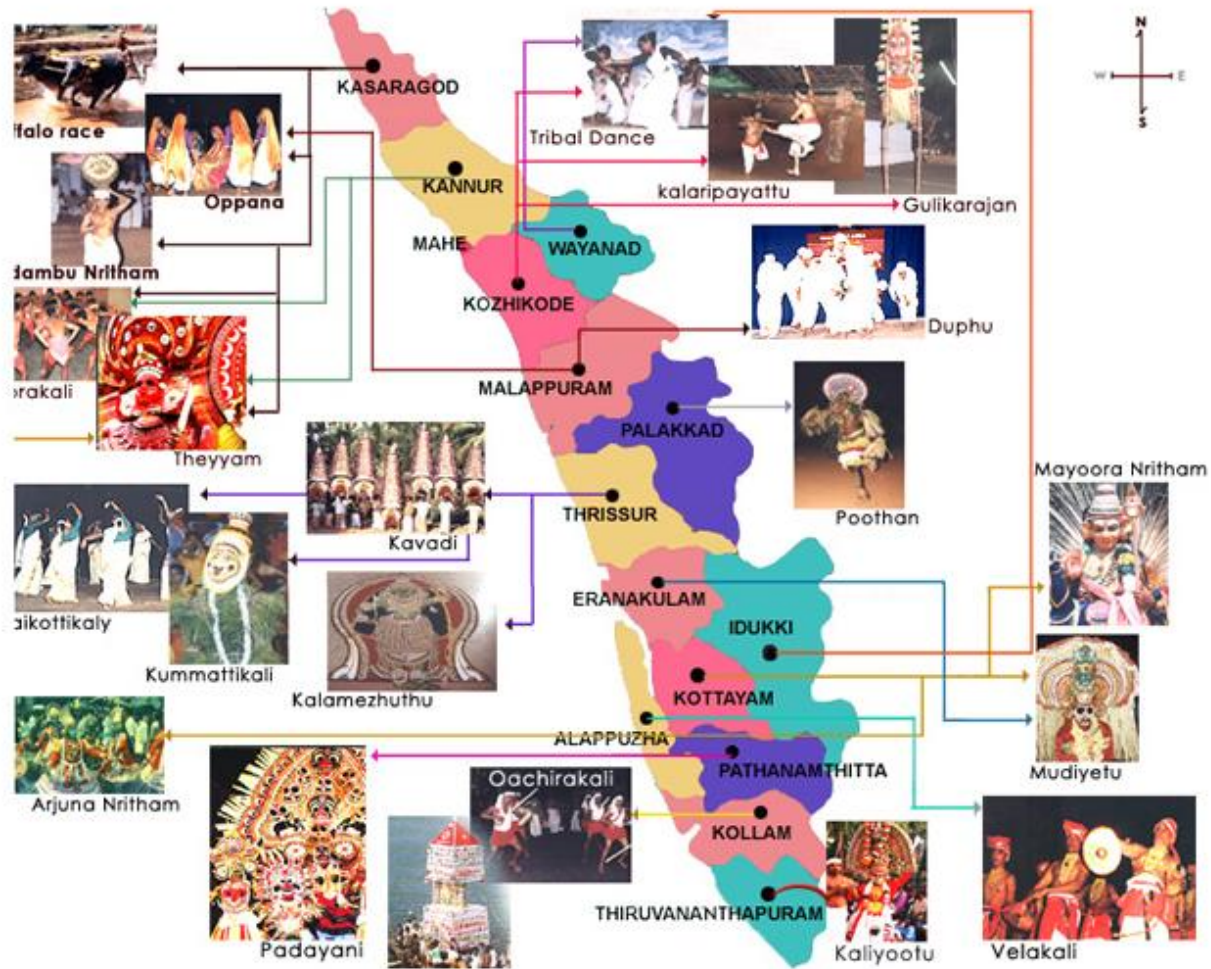
SOCIAL FOLK CUSTOM



PERFORMING FOLK ARTS



FOLK ARTS OF KERALA



RITUAL PERFORMANCES OF KERALA

- ◉ Poorakkali
- ◉ Theyyam
- ◉ Thira
- ◉ Poothan
- ◉ Kummatti
- ◉ Kavadi
- ◉ Kalmezhuthu
- ◉ Mudi yettu
- ◉ Padayani
- ◉ Kaliyoottu etc etc

POORAKKALI



THEYYAM



POOTHAN



KUMMATTI



KAVADI



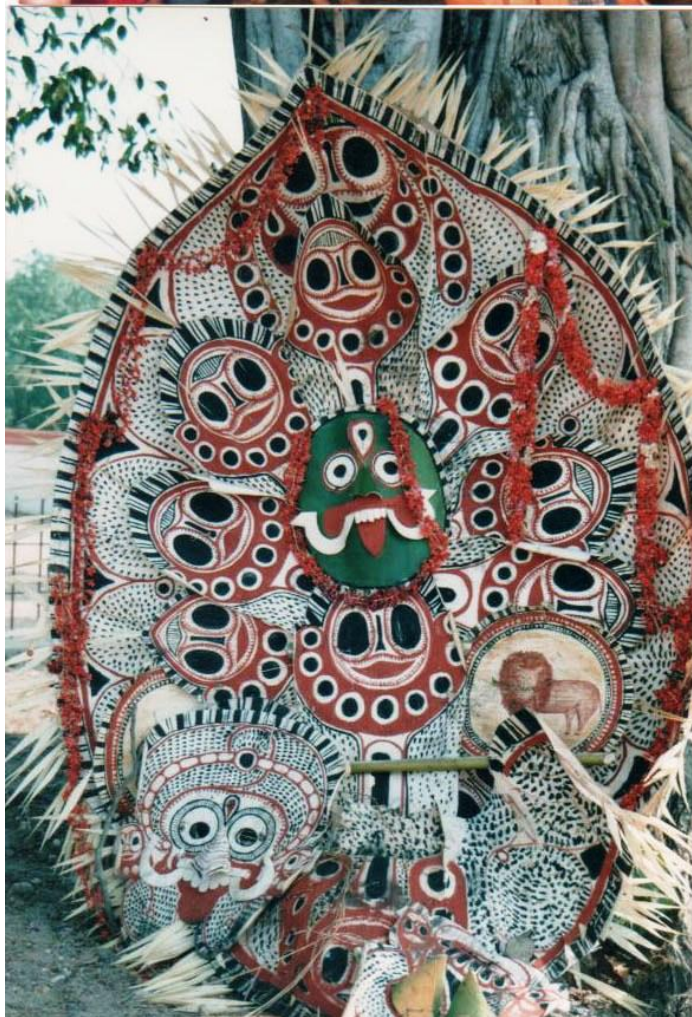
KALAMEZHUTH



MUDIYETTU



PADAYANI



KAALIYOOTT



NATURAL HERITAGE

- ◉ An inheritance of fauna and flora geology landscape, landforms and other natural resources



INFLUENCE OF NATURE IN FOLK PERFORMANCES OF KERALA

- ◉ Mythology
- ◉ Origin
- ◉ Tales
- ◉ Narratives
- ◉ costumes
- ◉ shape
- ◉ Make up

MYTHOLOGY



ORIGIN



TALE



NARRATIVE(ANDUM PALLUM)



COSTUMES

- ◉ Wood
- ◉ Palm leaves
- ◉ Clothes
- ◉ Peacock feather
- ◉ Flowers
- ◉ Areca sheath
- ◉ Shells, conch
- ◉ Leather, animal skin

COSTUMES



SHAPE



MAKEUP



ANIMAL WORSHIP (MONKEY)



ANIMAL WORSHIPS(TIGER)



SERPENT WORSHIP



TREE WORSHIP



OFFERINGS TO THE RITUAL PERFORMANCES

- ◉ Paddy
- ◉ Rice
- ◉ Betel leaves
- ◉ Flowers
- ◉ Grains
- ◉ Fruits
- ◉ Chicken
- ◉ Goats
- ◉ Fish





TOKEN OF BLESSINGS

- ◉ Rice
- ◉ Flowers
- ◉ Turmeric powder
- ◉ Betel leaves
- ◉ Cow dung ash
- ◉ Coconuts/tender coconuts
- ◉ Chicken
- ◉ Pop rice/beaten rice
- ◉ Powders used for Kalamezhuthu



END